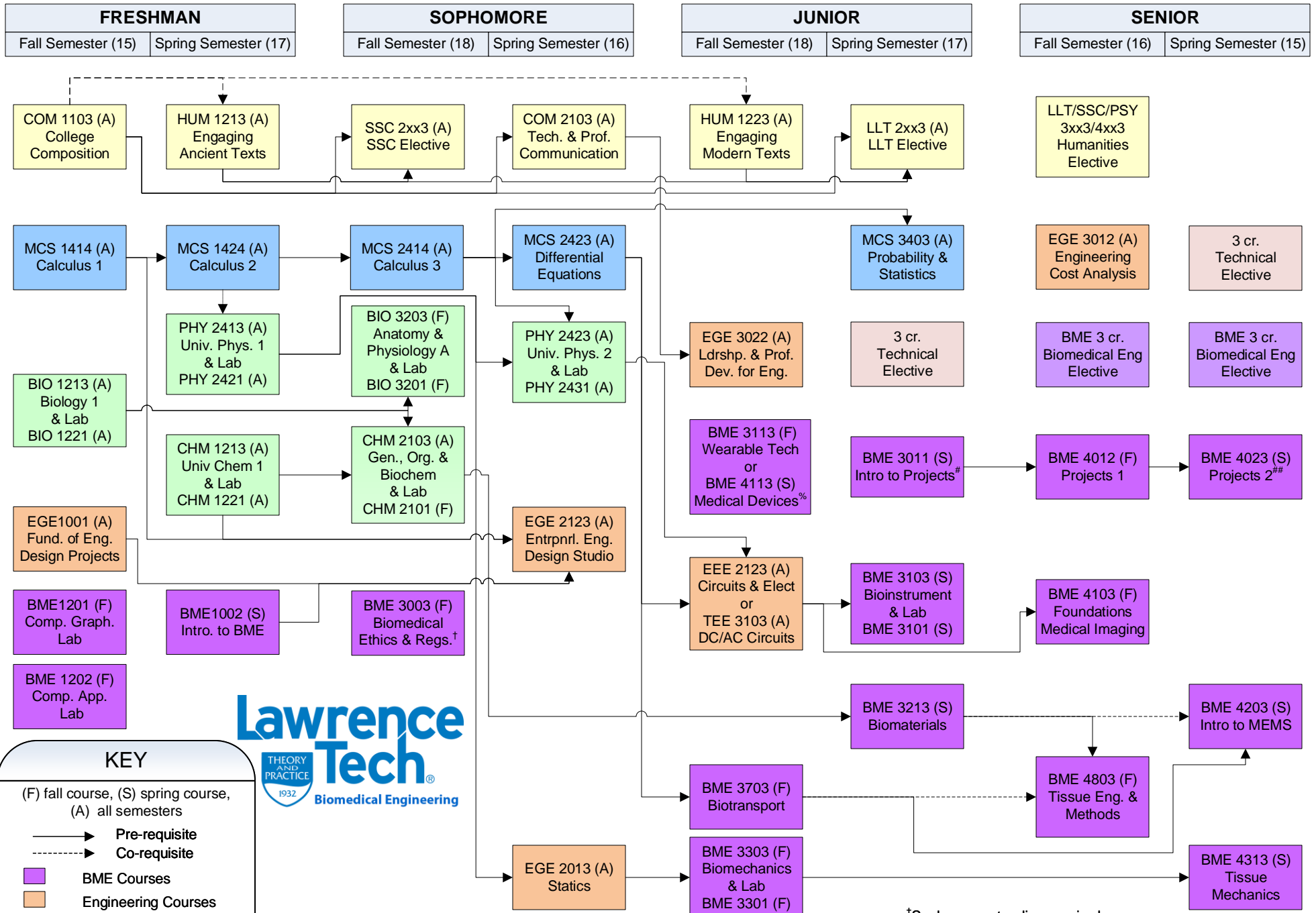


Bachelor of Science in BIOMEDICAL ENGINEERING PROGRAM Curriculum (132 Credits)

Draft 3/19/2024



†Sophomore standing required
%Co-requirement with BME3103

*Must be enrolled/have completed BME 3003 and at least two BME 3**3 courses

Must be enrolled/have completed all BME 3* courses