

Lawrence Technological University®

ARCHITECTURE + DESIGN ARTS + SCIENCES BUSINESS + INFORMATION TECHNOLOGY ENGINEERING SPECS@LTU



Lawrence Technological University is one of only 13 private, technological, and comprehensive doctoral universities in the United States. Founded in 1932, LTU is an innovative and creative university of the future, preparing leaders for the new technical era.

Students and alumni have gone on to design and engineer the tools, buildings, and products that changed the world for the better.

You can, too. Are you LTU?

*If you're a thinker, a builder...
if you're curious...
then you are LTU.*

LTU 5th in the nation for boosting graduates' earning potential
– Brookings Institution



Inspiring Innovation

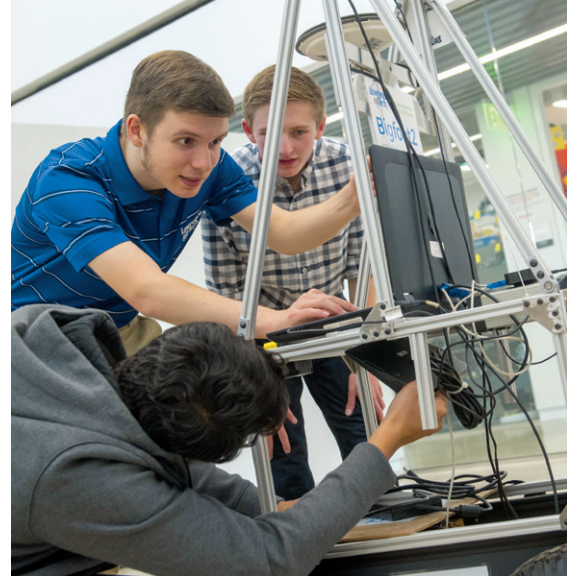
Relevant technology-infused academic programs.

Applied research.

Close industry partnerships.

LTU can transform your passion for technology and design into a unique ability to deliver inspired innovation.

Lawrence Tech is about **Theory and Practice** – taking abstract ideas into the real world to solve tomorrow's problems.



Dive into your major from day one. You don't have to wait to study what you love.



11:1 Student/faculty ratio. Never get lost in huge lectures.



Use the latest technologies in state-of-the-art labs, guided by professors with industry expertise.

Study with faculty who care.



Network with professionals in your field.



Realizing Your Potential

You are talented, smart, and want to make a difference.

LTU has the tools you need to succeed.

Together, we can make a difference. This is your moment.

80% ★★★★★
Students employed or registered for grad school at commencement

Lawrence Tech's **Blue Devil Motorsports** hosts an annual Grand Prix of time trials for student-designed Formula-style race cars. Students conceive, design, fabricate, and compete in half-scale open-wheel race cars. This is experiential learning in an exciting setting where students work together as a dedicated team. The racing competition is organized by SAE® International.



Jason Ross, Jr., a senior in the Media Communication program, made history in 2022 as the first Black play-by-play broadcaster for the Chicago Blackhawks hockey team. LTU's theory and practice education allowed Jason to build his industry experience while working toward his degree. "Lawrence Tech's well-rounded media communication program helped me carve out a versatile skill set, which has been critical to success in my sports broadcasting career." With his friend, Genna Rose, BSMC'20 (pictured), Jason broadcasts for the Chicago Blackhawks on NBC Sports Chicago.



Juan Jaramillo, BSBME'22, is a new product introduction biomedical engineer at Canadian Hospital Specialties Ltd., a medical device manufacturer and distributor that is continuously expanding internationally. "LTU gave me a top-notch combination of theory and practice, while also providing a personal touch with caring professors who get to know you and who invest great care and attention in their students."



Tiffany Brown, BSAr'04, MAr'07, MBA'15, is the executive director of the National Organization of Minority Architects, and founder of 400 FORWARD. The program supports career development of the next 400 women architects with a focus on Black girls through exposure, mentorship, and financial assistance. Tiffany was featured on the cover of *interiors + sources* magazine's September 2020 issue, and has received numerous awards and accolades.



LTU provides all undergraduates their own high-end laptop, loaded on average with over \$75,000 in industry-standard software. No reserving time at a computer lab across campus. Your lab travels with you 24/7.

ltu.edu/ehelp

Pursuing Excellence

Driven?

Curious?

Want to pursue learning experiences beyond the classroom?

LTU's dynamic culture of innovation, leadership, and entrepreneurship can help you achieve your goals.

\$1,000,000

Howard Hughes Medical Institute Grant awarded to LTU's College of Arts and Sciences, May 2017, to boost undergraduate education and research



STUDY ABROAD

Enhance your education with international experience. Tour with your professors and participate in alternative spring breaks.

ltu.edu/abroad



COMMUNITY SERVICE

Participate in service-learning activities and get involved in the community.



HONORS PROGRAM

Meet challenges at the highest level to prepare for your career or post-graduate education.

ltu.edu/honors



PROGRAM-SPECIFIC RESEARCH

LTU faculty are involved in a wide variety of research and development projects with industry-leading companies and government agencies.

Unlike other universities, LTU students are able to develop or participate in research projects as early as freshman year.

Small University, Big Experience

College is also about meeting people, having fun, and getting involved in campus activities. Starting with First Year Ignite weekend, you'll have lots of opportunities to make friends at LTU.

When you live on campus, you're always home. Your classes, the Café, field house, library, and athletic field are minutes away, and your friends are often a walk down the hall. At LTU, you're part of a community designed to ease your transition to college life.

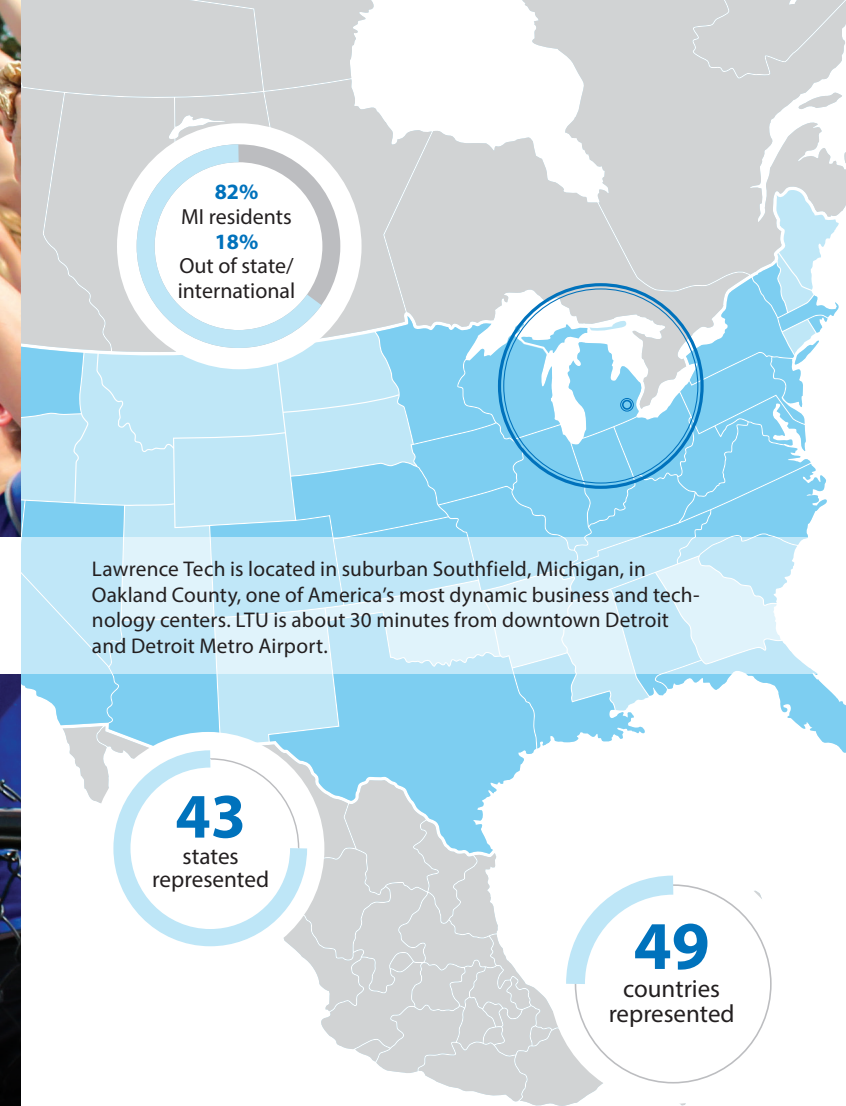
Convenient and affordable, University housing offers:

- Community living and one- and two-bedroom apartment-style suites
- All-you-care-to-eat meal plans

ltu.edu/studentactivities
ltu.edu/housing



You'll never be a stranger in LTU's small college setting.



Lawrence Tech is located in suburban Southfield, Michigan, in Oakland County, one of America's most dynamic business and technology centers. LTU is about 30 minutes from downtown Detroit and Detroit Metro Airport.



77 Student organizations

11 fraternities, and sororities



COMMUNITY AND SUPPORT

Student organizations include Greek life, professional organizations, and a range of student interest organizations like the Black Students Union, Fishing Club, Out@LTU, Sexuality and Gender Alliance, Society of the Dramatic Arts, Student-Athlete Leadership Team, Student Government, and much more.

The Office of **Disability Services** and the Office of **Diversity, Equity, and Inclusion** ensure that LTU students, faculty and staff have the resources they need to go and grow.

Founded in 2011, the virtual **LGBTQ+ Resource Center** provides resources to the LTU community.

The **Maibach Interfaith Lounge** is open to all students during regular business hours for quiet reflection, personal meditation and/or prayer.

Additional resources and diversity statistics can be found at

ltu.edu/dei



WiFi in every room

67% Male 33% Female

Tasty food options



LTU Spirit

Cheer the home team to victory!

LTU athletics offers sports for every skill and competition level: National Association of Intercollegiate Athletics, varsity, junior varsity, club, intramural, and esports.

LTU's Ridler Field House has Magnum strength equipment, cardio machines, a weight room, fitness track, and racquetball, volleyball, and basketball courts. Tech Rec classes, such as yoga, aerobics, or kickboxing, are held regularly.

LTUathletics.com



Nationally Ranked Women's Lacrosse Team



Creating Your Future


Finding employment on campus, a co-op, an internship, or your first job is about being ready when opportunity knocks. LTU's Office of Career Services can prepare you to compete with the best, helping you polish your resume, conduct a job search, and talk to interviewers. As an alum, you can access their services anytime.

INTERNSHIPS AND CO-OPS

Professional experience, mentoring, getting a foot in the door – one of the best ways to get a job is to intern and/or co-op. Career Services can help you make the connections.

ltu.edu/career_services

Average starting salary \$61,600
Mid-career \$116,500
-PayScale




LTU is at the center of the nation's #1 region for engineering, architecture, and technology.



A few of the places LTU grads are making a difference

Acument Global Technologies
Airbus Americas
Albert Kahn Associates
American Axle & Ascension Manufacturing
AT&T
Atwell, Inc.
Barton Malow

Beaumont Health System
Blue Cross, Blue Shield Comau, Inc.
DENSO International North America
DTE Energy
Faurecia
Firstronic LLC

Ford Motor Company
General Dynamics
General Motors
Gensler
Harman International
IBM
ImageSoft
Johnson Controls
Lear

MAHLE
Mannik Smith Group
Microsoft
NASA
Panasonic Corporation
Peugeot
Quicken Loans
ROSSETTI
Schweitzer Engineering Laboratories

Smith Group
Sports Illustrated
Stellantis
TARDEC
TMP Architecture
VectorForm
Walbridge
Walt Disney World
WXYZ-TV
ZF TRW Automotive

Companies recruit on campus in a typical year **300+**  **10,000+** Jobs posted annually

★★★★ **80%** Students employed or registered for grad school at commencement – greater than the national average



Darpan Arora, MArch'18, is a building information modeling manager at Alexander Bogaerts & Associates, a firm specializing in residential architecture. Darpan oversees 3D modeling of architectural projects along with the design work he does as a team member. "LTU provided me with multiple research opportunities that helped me build strong industry connections to kick-start my career. The ability to choose between design and research, in-person and online classes, as well as easy communication with the faculty is what made Lawrence Tech special for me."



Luke Sabo, BSMS'21, is an actuarial analyst at AmeriTrust Group working toward becoming a fully certified actuary. "There are 10 very difficult exams and I am currently studying for my third one. I have been able to pass these exams due to LTU's rigorous math program properly preparing me. The faculty at LTU gave up their free time outside of class to help me prepare for the first two exams while I was still in school."



Brittany Wieland, BSBME'21, is a body armor engineer for the Department of Defense who says her experience in LTU's Biomedical Engineering program proves useful to her every day. "The department really immerses its students in project-oriented learning and research opportunities that force us to be well practiced in the engineering design process. The hands-on curriculum, combined with the staff's support, truly provides you with all the keys to success for the future."



Zachary Farrer, BSBA'19, is a Senior Financial Analyst at McQueen Financial Advisors where he provides merger and acquisition (M&A) advisory services to middle-market financial institutions. He enjoys assisting in transactions that have a positive effect on the community and feels that LTU helped prepare him for his career because he was able to interact with his LTU professors who had real industry experience.

Apply ltu.edu/apply

FRESHMAN STUDENTS

In addition to submitting your application, please provide:

- \$30 application fee
- Official high school transcripts
- Optional: ACT/SAT scores
- Essay Sample topics include information about your career goals, why you are choosing a particular major, or why you are choosing to apply to Lawrence Tech.

TRANSFER STUDENTS

In addition to submitting your application, please provide:

- \$30 application fee
- Official high school transcripts
- Official university/community college transcripts
- Portfolio (required to transfer credits for design courses in any art/design major)

SPECS@LTU

- \$30 application fee
- Official high school transcripts

INCOMING STUDENT AVERAGES

GPA 3.44	SAT (ERW+M) 1132.4	ACT 24.7
--------------------	------------------------------	--------------------

YOUR INVESTMENT

At LTU, your tuition supports a personal education: lots of individual attention, small classes, industry-leading faculty, great facilities, the all-encompassing LTUzone computing services. And the investment pays off: the earning power of a Lawrence Tech bachelor's degree ranks in the top 11% of all U.S. universities.

The following estimated costs represent full-time enrollment, based on 30 credits per year. There is no difference between in- and out-of-state tuition.

Specs@LTU	\$16,900*
College of Architecture and Design	\$38,100
College of Arts and Sciences and College of Business and Information Technology	\$38,550
College of Engineering	\$38,950
Housing	\$7,340
Meal Plan	\$3,980
Total Cost Range	\$49,420 - \$50,770

*Figures do not include books, supplies, or personal expenses.
See scholarship opportunities

FINANCIAL AID

Incoming LTU undergrad students receive more than \$45 million annually in financial aid. Federal, state, and institutional grants, loans, academic scholarships, need-based funding, and work-study can make your education more affordable. ltu.edu/financial_aid

HOW TO APPLY FOR FINANCIAL AID AND SCHOLARSHIPS

Fill out the Free Application for Federal Student Aid (FAFSA) at studentaid.gov after October 1 of your senior year and preferably before March 1 (Lawrence Tech school code: 002279). Freshman students admitted by March 1 and transfer students admitted by May 1 are **automatically considered** for competitive, merit-based scholarships. No additional application is necessary. Funding is limited. LTU students may be eligible for up to two scholarships.

ATHLETIC SCHOLARSHIPS

Athletes can visit [LTUathletics.com](https://ltuathletics.com), click on Be Recruited, and fill out the recruiting questionnaire. A coach will contact you. Band, dance team, and esports scholarships are also available.

FIVE IMAGES CoAD SCHOLARSHIPS

Scholarships are available to students pursuing majors in the College of Architecture and Design and who meet the requirements for an LTU academic scholarship. Submit five images of your work by February 1 for the fall semester. ltu.edu/architecture_and_design/scholarship.asp

ROBOTICS SCHOLARSHIPS

Robotics scholarships are awarded for student participation in First Robotics, VEX, OCCRA, or Robofest. Students receive \$3,000 annually for a total of \$12,000 over 4 years. ltu.edu/scholarships

SCHOLARSHIP COMPETITION

Accepted freshman students have the opportunity to earn up to \$4,000 more in scholarship money for each of four years at LTU (not to exceed tuition). ltu.edu/scholarshipcompetition

SCHOLARSHIP OPPORTUNITIES

Test optional for Fall 2023. Test scores are **not** required to receive scholarships; students who are unable to submit standardized scores will not be disadvantaged in the merit scholarship process. If you have already taken or plan on taking the SAT or ACT and would like to submit test scores, your test scores will be considered supplemental information.

Lawrence Tech offers a variety of other scholarships and new students are eligible to receive up to two scholarships.

Scholarships range from \$4,500 to \$16,000.

Additional Scholarships include:

Buell Honor Scholarship

DECA Scholarship*

Donley Scholarship

National Blue Devil Scholarship

Raise.me Scholarship**

Specs@LTU

* application required
** external profile required

All admitted students for the Fall 2023 semester will be reviewed for an academic scholarship upon acceptance to LTU.



A Associate
 B Bachelor's
 P Pre-Professional
 M Master's
 D Doctoral
 Italic Concentration
C Certificate
 * Also Online

ARCHITECTURE + DESIGN

- B Architecture
- B Civil Engineering and Architecture
- B Game Design
- B Graphic Design
- B Industrial Design
- B Interior Design
- B Transportation Design
- B + M Architecture *(combined bachelor's and master's)*
- M Architecture*

ARTS AND SCIENCES

- A General Studies
- A Media Arts and Production
- B Biology
- B Chemistry
 - Chemical Biology*
 - Environmental Chemistry*
- B Computer Science
 - Artificial Intelligence*
 - Business Software Development*
 - Cybersecurity*
 - Game Software Development*
 - Scientific Software Development*
 - Software Engineering*
- B Data Science
- B Mathematical Sciences
 - Actuarial Science*
 - Applied Science*

- B Media Communication
 - Architectural Studies*
 - Film, Television, and Video Production*
- B Nursing
- B Physics
 - Computer Science*
- B Psychology
 - Clinical*
 - General and Applied*
 - Industrial/Organizational*
 - Pre-Medical/Biobehavioral*

- B Technological Humanities
- B + M Computer Science *(combined bachelor's and master's)*

- M Artificial Intelligence
- M Computer Science
- M Physician Assistant

BUSINESS + INFORMATION TECHNOLOGY

- B Business Administration
 - Majors:*
 - Accounting*
 - Finance*
 - General Business*
 - Information Technology*
 - Marketing*
- B Business Data Analytics
- B Information Technology
- M Business Administration*
- M Business Data Analytics
- M Healthcare Administration*
- M Information Technology*

ENGINEERING

- B Audio Engineering Technology
- B Biomedical Engineering
- B Civil Engineering
- B Computer Engineering
- B Construction Engineering
 - Technology and Management*
- B Electrical Engineering
 - Computer Engineering*
 - Electronics Engineering*
 - Power Engineering*
- B Embedded Software Engineering
- B Industrial Engineering
- B Mechanical and Manufacturing Engineering
 - Technology*
- B Mechanical Engineering
 - Aeronautical*
 - Alternative Energy*
 - Automotive*
 - Manufacturing*
 - Nanoscience and Nanotechnology*
 - Solid Mechanics*
 - Thermal Fluids*
- B Robotics Engineering
- B + M Architectural Engineering *(combined bachelor's and master's)*
- M Artificial Intelligence
- M Automotive Engineering
- M Biomedical Engineering
- M Cardiovascular Perfusion
- M Civil Engineering*

- M Construction Engineering Management*
- M Electrical and Computer Engineering
- M Engineering Management*
- M Engineering Quality
- M Industrial Engineering*
- M Industrial Engineering and Engineering Management
- M Mechanical Engineering
- M Mechatronic and Robotics Engineering
- D Civil Engineering
- D Mechanical Engineering

PRE-PROFESSIONAL

- P Pre-Dental
- P Pre-Law
- P Pre-Medical
- P Post-Baccalaureate Certificate in Premedical Studies

SPECS@LTU CERTIFICATES

- C Broadcast Media Arts
- C Digital Media Arts
- C Graphic Design

For a full list of master's and doctoral programs, visit ltu.edu/academicsandmajors

ACCREDITATION

Lawrence Tech is fully accredited by the Higher Learning Commission (312.263.0456, www.hlcommission.org). Full report can be viewed in the LTU Library.

ADDITIONAL ACCREDITATIONS

Architecture: NAAB

Business and IT: AACSB, ACBSP, IACBE

Chemistry: American Chemical Society

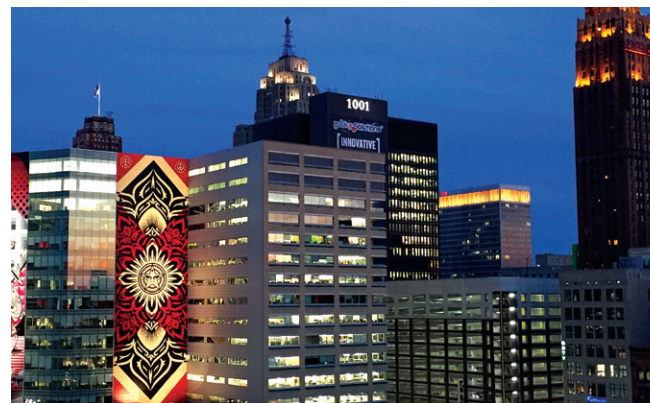
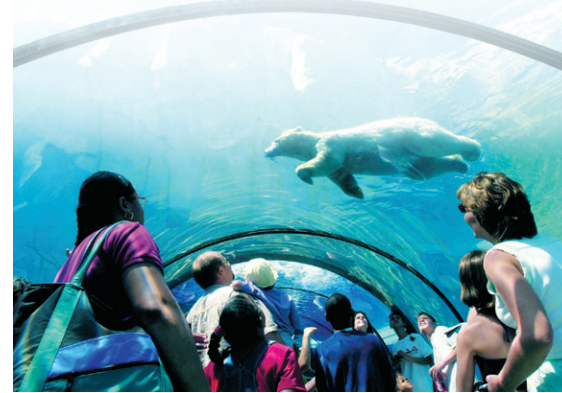
Engineering: ABET

Game art and graphic, industrial, interaction, interior, and transportation design: NASAD

Interior architecture and design: CIDA

NON-DISCRIMINATORY POLICY

Lawrence Technological University adheres and conforms to all federal, state, and local civil rights regulations, statutes, and ordinances. No person, student, faculty, or staff member will knowingly be discriminated against relative to the above statutes. Lawrence Tech is an Equal Opportunity Employer. Direct inquiries regarding non-discriminatory policies to the Division of Student Affairs, 248.204.4100.



Vibrant Metropolitan Area

At Lawrence Tech, you'll be a part of a region pulsing with fun opportunities:

big-city Detroit attractions

exciting suburbs

internationally recognized music scene

professional sports teams

beautiful parks and lakes

award-winning zoo

outstanding museums

modern and historic theaters

and Canada is right next door

City of Design

Detroit is the first U.S. city to be named a City of Design by the United Nations Educational, Scientific and Cultural Organization (UNESCO)



BEST COLLEGES IN THE MIDWEST

2022

PRINCETON REVIEW*

AMERICA'S BEST VALUE SCHOOLS

2022

U.S. NEWS & WORLD REPORT*

One of the oldest and largest architecture schools in the U.S.

BEST IN THE MIDWEST

2022

U.S. NEWS & WORLD REPORT*

HIGHEST ALUMNI SALARIES

2021

PAYSCALE

TOP 10% OF U.S. UNIVERSITIES

2021

FORBES



Visit

Take a campus tour, meet with a professor and advisor, or attend a special event. Parents are welcome.

upcoming.ltu.edu

Attend a summer camp. ltu.edu/summercamps

Contact

Lawrence Technological University Office of Admissions

21000 West Ten Mile Road, Southfield, MI 48075-1058

800.225.5588 Phone admissions@ltu.edu

248.204.3160 Phone ltu.edu

248.204.2228 Fax

248.450.0116 Text Us!

Follow



[lawrencetech](https://www.facebook.com/lawrencetech)



[lawrencetech](https://www.youtube.com/lawrencetech)



[@LTUadmissions](https://twitter.com/LTUadmissions)



[lawrencetechu](https://www.instagram.com/lawrencetechu)