

Lawrence Technological University®

ARCHITECTURE AND DESIGN ARTS AND SCIENCES BUSINESS AND INFORMATION TECHNOLOGY ENGINEERING



Lawrence Technological University was founded in **1932** in the middle of an innovation explosion that would change the world. With the help of Henry and Edsel Ford, who provided space next to their Model T plant, LTU realized the dream of preparing leaders for the new technical era.

Today, LTU is still changing the world.

Students and alumni have gone on to design and engineer the tools, buildings, and products that helped define their generations.

And tomorrow's students will do the same.

*If you're a thinker, a builder...
if you're curious...
then you are Lawrence Tech.
It's where everything is possible
and possible is everything.*

LTU 5th in the nation for boosting
graduates' earning potential
– Brookings Institution





Inspiring Innovation

Relevant technology-infused academic programs.

Applied research.

Close industry partnerships.

LTU can transform your passion for technology and design into a unique ability to deliver inspired innovation.

Lawrence Tech is about **Theory and Practice** – taking abstract ideas into the real world to solve tomorrow's problems.



Study with faculty who care.



11:1 Student/faculty ratio. Never get lost in huge lectures.

Dive into your major from day one.
You don't have to wait to study what you love.



Network with professionals
in your field.





Use the latest technologies
in state-of-the-art labs,
guided by professors
with industry expertise.



Realizing Your Potential

*You have the smarts,
talent, and drive.*

*LTU has the top-notch
resources to turn your
aptitude into expertise.*

*You'll get the tools you
need to succeed.*

92% ★★★★★

Students employed or registered for
grad school at commencement

Transportation Design student **Spencer Schulte** was selected runner up in the Magna 2020 Global Bold Perspective North America awards for his Rivian Gargoyle design. Shulte's entry incorporates various safety features including a "crime prevention eye." The competition recognizes inspiring vehicle exterior and mobility designs of the future.

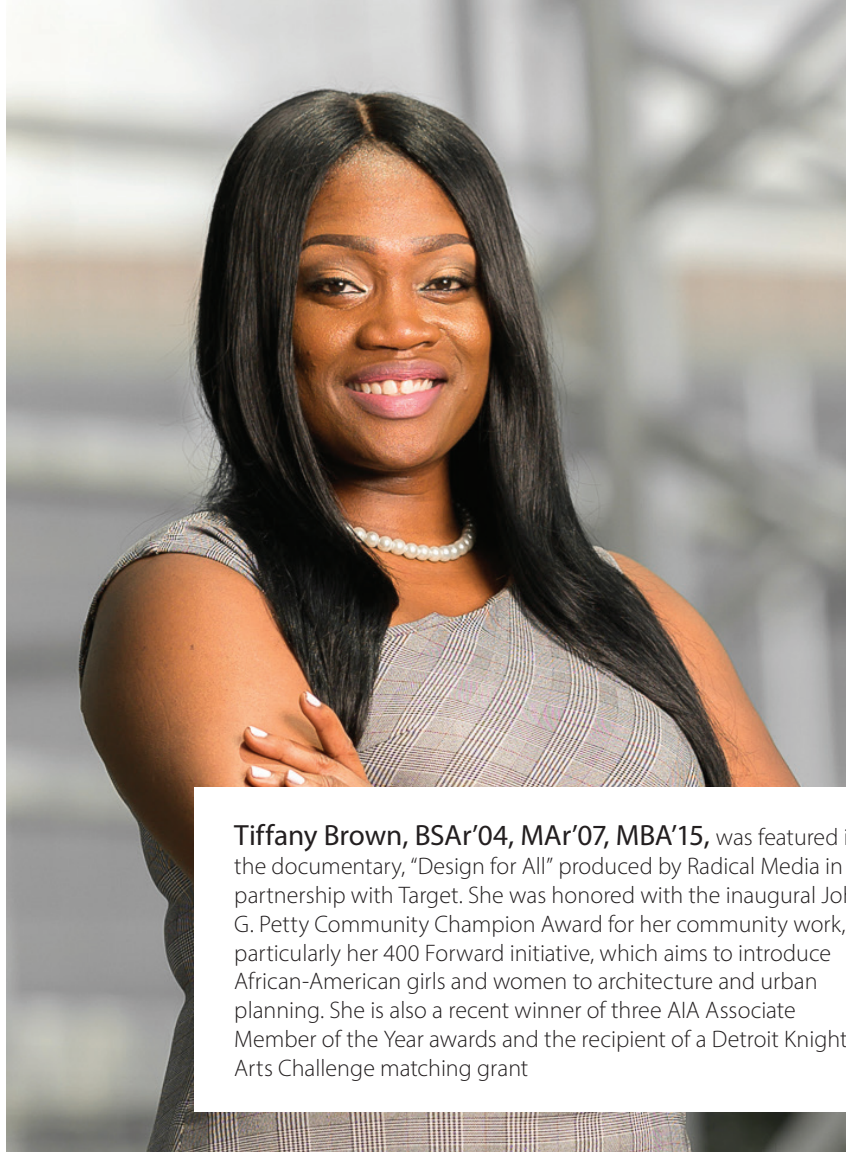


Jason Ross, Jr., a senior in LTU's Media Communication program, has begun contributing to Sports Illustrated's Detroit Tigers coverage. Jason applies LTU's theory and practice education to build his industry experience while he completes his degree. The skills he is gaining through experiential learning help him perform at a high level; he films his segments, and also writes and edits his own footage.



Lawrence Technological University students and LTU computer science professor CJ Chung will work with Hyundai Mobis and the Russian technology company Yandex to create a taxi service from Detroit's TCF Center to downtown Detroit hotels for the 2021 North American International Auto Show.





Tiffany Brown, BSAr'04, MAR'07, MBA'15, was featured in the documentary, "Design for All" produced by Radical Media in partnership with Target. She was honored with the inaugural John G. Petty Community Champion Award for her community work, particularly her 400 Forward initiative, which aims to introduce African-American girls and women to architecture and urban planning. She is also a recent winner of three AIA Associate Member of the Year awards and the recipient of a Detroit Knight Arts Challenge matching grant



LTU provides all undergraduates their own high-end laptop, loaded on average with over \$75,000 in industry-standard software. No reserving time at a computer lab across campus. Your lab travels with you 24/7.

www.ltu.edu/LTuZone

Pursuing Excellence

Driven?

Curious?

Wish to pursue learning experiences beyond the classroom?

LTU's dynamic culture of innovation, leadership, and entrepreneurship can help you achieve your goals.

\$1,000,000

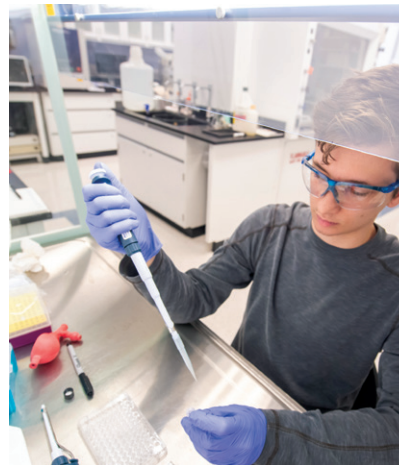
Howard Hughes Medical Institute Grant awarded to LTU's College of Arts and Sciences, May 2017, to boost undergraduate education and research



QUEST

Test drive a career or explore your passion in music, medicine, art, science, or literature in this experiential learning initiative. You'll graduate with a Quest transcript in addition to your GPA transcript.

www.ltu.edu/quest



STUDY ABROAD

Enhance your education with international experience. Study, travel, or volunteer abroad. Take tours with your professors and participate in alternative spring breaks.

www.ltu.edu/abroad





HONORS PROGRAM

Meet challenges at the highest level to prepare for your career or post-graduate education.

www.ltu.edu/honors



COMMUNITY SERVICE

Participate in service-learning activities and get involved in the community.



LEADERSHIP PROGRAM

Designed to develop your leadership and entrepreneurial skills, Lawrence Tech's Leadership Program is integrated into every bachelor's degree. You'll graduate with a workforce advantage.

www.ltu.edu/leadership



Small University, Big Experience

College is also about meeting people, having fun, and getting involved in campus activities. Starting with Orientation & Registration and First Year Ignite weekend, you'll have lots of opportunities to make friends at LTU.

When you live on campus, you're always home. Your classes, the Blue Devil Cafe, field house, library, and athletic field are minutes away, and your friends are often a walk down the hall. At LTU, you're part of a community designed to ease your transition to college life.

Convenient and affordable, University housing offers:

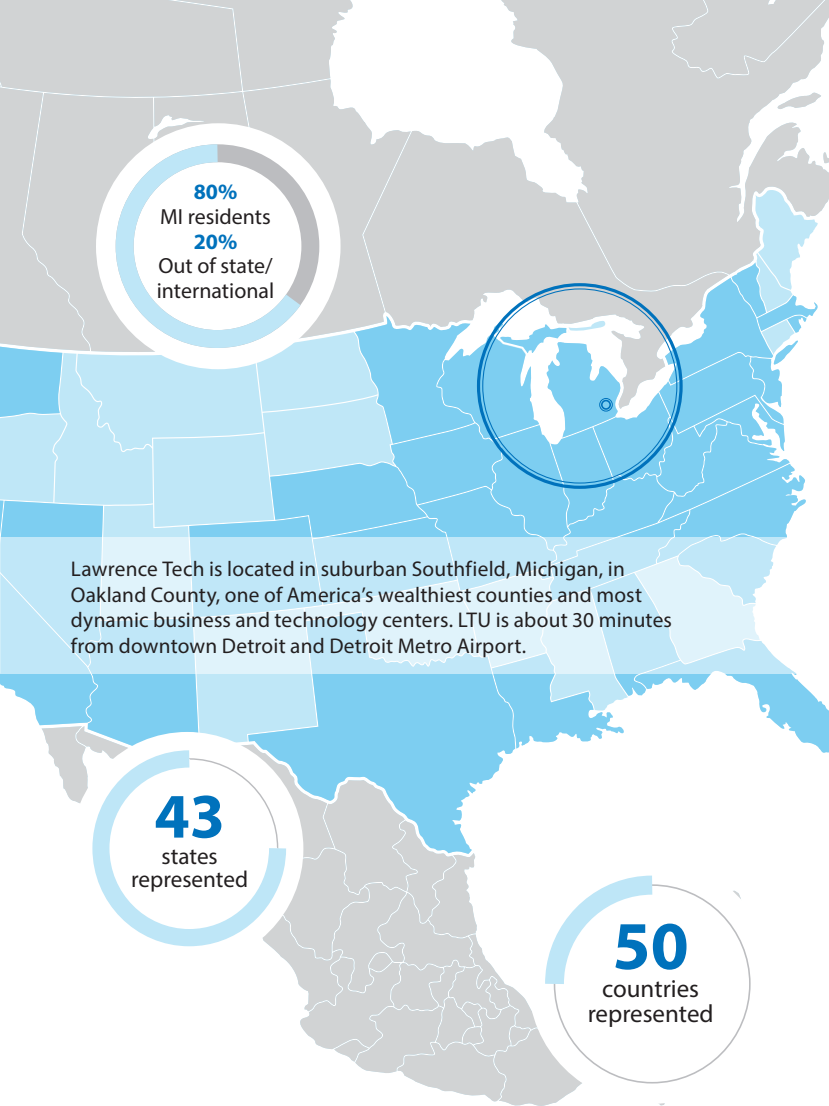
- Community living and one- and two-bedroom apartment-style suites
- All-you-care-to-eat meal plans

www.ltu.edu/studentactivities

www.ltu.edu/housing



You'll never be a stranger in LTU's small college setting.



Lawrence Tech is located in suburban Southfield, Michigan, in Oakland County, one of America's wealthiest counties and most dynamic business and technology centers. LTU is about 30 minutes from downtown Detroit and Detroit Metro Airport.



60+
Student organizations.
10 fraternities,
and sororities



Cable and
WiFi in
every room

 Tasty food options

 70% Male  30% Female



Blue Devil Spirit

*Cheer the home team
to victory!*

LTU athletics offers Blue Devil sports for every skill and competition level: National Association of Intercollegiate Athletics, varsity, junior varsity, club, and intramural.

LTU's Ridler Field House has Magnum strength equipment, cardio machines, weight room, fitness track, and racquetball, volleyball, and basketball courts. Tech Rec classes, such as yoga, aerobics, or kickboxing, are held regularly.

www.LTUathletics.com





Creating Your Future

Finding employment on campus, a co-op, an internship, or your first job is about being ready when opportunity knocks. LTU's Office of Career Services can prepare you to compete with the best, helping you polish your resume, conduct a job search, and talk to interviewers. As an alum, you can access their services anytime.

INTERNSHIPS AND CO-OPS

Professional experience, mentoring, getting a foot in the door – one of the best ways to get a job is to intern and/or co-op. Career Services can help you make the connections.

www.ltu.edu/career_services

Average starting salary \$57,900
Mid-career \$108,400
–PayScale



LTU is at the center of the

**nation's
#1 region**

for engineering,
architecture,
and technology.



Ivan Garcia, BSBM'15,

joined Westin Hotels & Resorts soon after his graduation and has been on an upward trajectory ever since. He now oversees all corporate accounts and events at the Westin Hotel in Chicago. Prior to his promotion, he was named Best of the Book as the top manager at the Westin Book Cadillac Hotel in Detroit.



A few of the places
LTU
 grads are
 making a difference

Acument Global
 Technologies
 Airbus Americas
 Albert Kahn Associates
 American Axle &
 Manufacturing
 AT&T
 Atwell, Inc.
 Barton Malow

Beaumont Health System
 Blue Cross, Blue Shield
 Comau, Inc.
 DENSO International
 North America
 DTE Energy
 Faurecia
 Fiat Chrysler Automobiles
 Firstronic LLC

Ford Motor Company
 General Dynamics
 General Motors
 Gensler
 Harman International
 IBM
 ImageSoft
 Johnson Controls
 Lear

MAHLE
 Mannik Smith Group
 Microsoft
 NASA
 Panasonic Corporation
 Peugeot
 Quicken Loans
 ROSSETTI
 Schweitzer Engineering
 Laboratories

Smith Group
 Sports Illustrated
 TARDEC
 TMP Architecture
 VectorForm
 Walbridge
 Walt Disney World
 WXYZ-TV
 ZF TRW Automotive

Companies recruited
 on campus in 2018–19

300+



6,000+

Jobs posted annually

★★★★ 92%

Students employed or registered for grad school at
 commencement – greater than the national average

Alisha Stidam,
BSCvE'18,
 a civil engineer at OHM
 Advisors, is excited to work
 for a firm that not only
 specializes in architecture,
 engineering and planning,
 but one that also focuses on
 community advancement.
 Small class sizes and close
 working relationships with
 LTU faculty prepared her
 well for the real world.



Jeremy Nafus,
BSIT'17,
 enjoys the work variety in his
 job as a Network Operations
 CNA at Ford Motor Company.
 He services wireless
 technologies throughout the
 globe in Ford's office buildings,
 but more importantly in vehicle
 production plants. He also is
 involved in process creation
 and process editing for his
 global Network Operations
 team to help them work smarter
 and more efficiently for various
 network changes that need
 to be completed on a
 day-to-day basis.



Genna Rose,
BSMC'20,
 is the host and publisher
 for Sports Illustrated's
 coverage of the Detroit
 Tigers, and a contributor
 for Sports Illustrated's
 national college sports.
 Genna uses the skills she
 gained at LTU; she films her
 own segments, writes her
 stories, creates the graphics,
 and edits the footage.

If you believe that everything is possible, and that possible is everything, apply today at www.ltu.edu/apply.

FRESHMAN STUDENTS

In addition to submitting your application, please provide:

- ☐ \$30 application fee
- ☐ Official high school transcripts
- ☐ Optional: ACT/SAT scores
- ☐ Essay (essay prompt: Discuss an accomplishment, event, or realization that sparked a period of personal growth and a new understanding of yourself or others.)

TRANSFER STUDENTS

In addition to submitting your application, please provide:

- ☐ \$30 application fee
- ☐ Official high school transcripts
- ☐ Official university/community college transcripts
- ☐ Essay (essay prompt: Discuss an accomplishment, event, or realization that sparked a period of personal growth and a new understanding of yourself or others.)
- ☐ Portfolio (required to transfer credits for design courses in any art/design major)

INCOMING STUDENT AVERAGES

ACT 25.8	SAT 1157 (ERW+M)	GPA 3.44
----------	------------------	----------

YOUR INVESTMENT

At LTU, your tuition supports a personal education: lots of individual attention, small classes, industry-leading faculty, great facilities, the all-encompassing LTUZone computing services. And the investment pays off: the earning power of a Lawrence Tech bachelor's degree ranks in the top 11% of all U.S. universities.

The following estimated costs represent full-time enrollment, based on 30 credits per year. There is no difference between in- and out-of-state tuition.

Figures do not include books, supplies, or personal expenses.

College of Architecture and Design	\$34,750
College of Arts and Sciences and College of Business and Information Technology	\$35,350
College of Engineering	\$36,850
Housing	\$7,050
Meal Plan	\$3,680
Total Cost Range	\$45,480 - \$47,580


FINANCIAL AID

74% of entering Lawrence Tech students receive financial aid – over \$45 million annually. Federal, state, and institutional grants, loans, academic scholarships, need-based funding, and work-study can make your education more affordable. www.ltu.edu/financial_aid

HOW TO APPLY FOR FINANCIAL AID AND SCHOLARSHIPS

Fill out the Free Application for Federal Student Aid (FAFSA) at www.fafsa.ed.gov after October 1 of your senior year and preferably before March 1 ([Lawrence Tech school code: 002279](#)). Freshman students admitted by March 1 and transfer students admitted by May 1 are **automatically considered** for competitive, merit-based scholarships. No additional application is necessary. Funding is limited. LTU students may be eligible for up to two scholarships.

ATHLETIC SCHOLARSHIPS

Athletes can visit www.LTUathletics.com, click on , Recruit Me, and fill out the recruiting questionnaire. A coach will contact you. Band and dance team scholarships are also available.

FIVE IMAGES CoAD SCHOLARSHIPS

Scholarships are available to students pursuing majors in the College of Architecture and Design and who meet the requirements for an LTU academic scholarship. Submit five images of your work by February 1 for the fall semester. www.ltu.edu/architecture_and_design/scholarship.asp

ROBOTICS SCHOLARSHIPS

Robotics scholarships are awarded for student participation in First Robotics, VEX, OCCRA, or Robofest. Students receive \$3,000 annually for a total of \$12,000 over 4 years. www.ltu.edu/scholarships

SCHOLARSHIP COMPETITION

Accepted freshman students have the opportunity to earn up to \$4,000 more in scholarship money for each of four years at LTU (not to exceed tuition). www.ltu.edu/scholarshipcompetition

SCHOLARSHIP OPPORTUNITIES

Test scores are **not** required to receive scholarships; students who are unable to submit standardized scores will not be disadvantaged in the merit scholarship process. If you have already taken or plan on taking the SAT or ACT and would like to submit test scores, your test scores will be considered supplemental information.

Lawrence Tech offers a variety of other scholarships and new students are eligible to receive up to two scholarships. The deadline for submitting all scholarship applications is February 1, 2021.

Additional Scholarships include:

Buell Honor Scholarship*

DECA Scholarship*

Donley Scholarship*

National Blue Devil Scholarship

Raise.me Scholarship

* application required

All admitted students for the Fall 2021 semester will be reviewed for an academic scholarship upon acceptance to LTU.



ARCHITECTURE AND DESIGN

- B Architecture
- B Game Design
- B Graphic Design
- B Industrial Design
- B Interior Architecture
- B Transportation Design
- B + M Architecture (combined bachelor's and master's programs)
- M Architecture*
- M Interior Design

ARTS AND SCIENCES

- A General Studies
- A Radio and Television Broadcasting
- B Chemical Biology
- B Chemistry
Engineering Chemistry
- B Computer Science
Business Software Development
Game Software Development
Scientific Software Development
Software Engineering
- B Environmental Chemistry
- B Mathematical Sciences
Actuarial Sciences
Applied Science
- B Mathematics and Computer Science

- B Media Communication
Architectural Studies
Film, Television, & Video Production
- B Molecular and Cell Biology
- B Nursing
- B Physics
- B Physics and Computer Science
- B Psychology
Clinical
General and Applied
Industrial/Organizational
Pre-Medical/Biobehavioral
- B Technological Humanities
- B + M Computer Science (combined bachelor's and master's programs)
- M Computer Science

PRE-PROFESSIONAL

- P Pre-Dental
- P Pre-Law
- P Pre-Medical

.....
**Many programs available
 evenings and online*

BUSINESS AND INFORMATION TECHNOLOGY

- B Business Administration
Majors:
Accounting
Finance
General Business
Information Technology
Marketing
- B Information Technology
- M Business Administration*
- M Healthcare Administration*
- M Information Technology*

ENGINEERING

- B Audio Engineering Technology
- B Biomedical Engineering
- B Civil Engineering
- B Computer Engineering
- B Construction Engineering
Technology and Management
- B Electrical Engineering
Computer Engineering
Electronics Engineering
Power Engineering
- B Embedded Software Engineering
- B Industrial Engineering

- B Mechanical and Manufacturing
Engineering Technology
- B Mechanical Engineering
Aeronautical
Alternative Energy
Automotive
Manufacturing
Nanoscience and Nanotechnology
Solid Mechanics
Thermal Fluids
- B Robotics Engineering
- B + M Architectural Engineering
(combined bachelor's and master's programs)
- M Automotive Engineering
- M Biomedical Engineering
- M Civil Engineering*
- M Construction Engineering Management*
- M Electrical and Computer Engineering
- M Engineering Management*
- M Engineering Technology
- M Industrial Engineering*
- M Mechanical Engineering
- M Mechatronic Systems Engineering
- D Civil Engineering
- D Mechanical Engineering

ACCREDITATION

Lawrence Tech is fully accredited by the Higher Learning Commission (312.263.0456, www.hlcommission.org). Full report can be viewed in the LTU Library.

ADDITIONAL ACCREDITATIONS
Architecture: NAAB
Business and Information Technology:
 AACSB, ACBSP, IACBE

Chemistry: American Chemical Society
Engineering: ABET

Game art and graphic, industrial, interaction, interior, and transportation design: NASAD
Interior architecture and design: CIDA

NON-DISCRIMINATORY POLICY Lawrence Technological University adheres and conforms to all federal, state, and local civil rights regulations, statutes, and ordinances. No person, student, faculty, or staff member will knowingly be discriminated against relative to the above statutes. Lawrence Tech is an Equal Opportunity Employer. Direct inquiries regarding non-discriminatory policies to the Division of Student Affairs, 248.204.4100.



Vibrant Metropolitan Area

At Lawrence Tech, you'll be a part of a region pulsing with fun opportunities:

big-city Detroit attractions

internationally recognized music scene

professional sports teams

beautiful parks and lakes

award-winning zoo

outstanding museums

modern and historic theaters

and Canada is right next door



City of Design

Detroit is the first U.S. city to be named
a City of Design by the United Nations
Educational, Scientific and Cultural
Organization (UNESCO)



BEST
COLLEGES
IN THE
MIDWEST

2021

PRINCETON
REVIEW®

One of the oldest
and largest
architecture
schools
in the U.S.



AMERICA'S
BEST
VALUE
SCHOOLS

2021

U.S. NEWS &
WORLD REPORT®

America's
TOP
Colleges
– Forbes

BEST
IN THE
MIDWEST

2021

U.S. NEWS &
WORLD
REPORT®

Visit

Take a campus tour, meet with a professor and advisor,
or attend a special event. Parents are welcome.

www.upcoming.ltu.edu

Attend a summer camp. www.ltu.edu/summercamps

Contact

Lawrence Technological University Office of Admissions

21000 West Ten Mile Road, Southfield, MI 48075-1058

800.225.5588 Phone admissions@ltu.edu

248.204.3160 Phone www.ltu.edu

248.204.2228 Fax

248.450.0116 Text Us!

Follow



lawrencetech



lawrencetech



@LTUadmissions



lawrencetechu



BEST
GAME
DESIGN

Princeton Review®
PC Gamer
Animation Career Review

HIGHEST
ALUMNI
SALARIES

2020

PAYSCALE